

# Crown Pointe



LIVECROWNPOINTE.COM



# Crown Pointe

## EXCEPTIONAL BY NATURE

Located one mile off Highway 17 on Sloop Point Road, you'll find Crown Pointe, Hampstead, North Carolina's most exceptional new home communities.

Once you arrive, you're welcomed by a stately entrance, mature oaks and winding canopied streets, all surrounded by the area's natural beauty. You'll notice dual sidewalks and beautiful custom homes on spacious, half-acre wooded homesites.

Crown Pointe is situated on Virginia Creek, which connects to the Intracoastal Waterway. Launch your kayak from the day dock or just sit back and enjoy the view from the gazebo or relax by the pool.

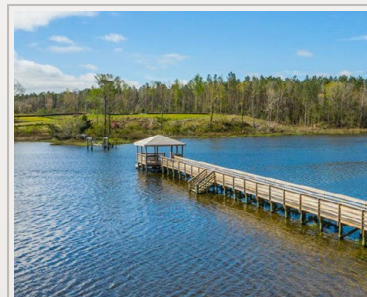
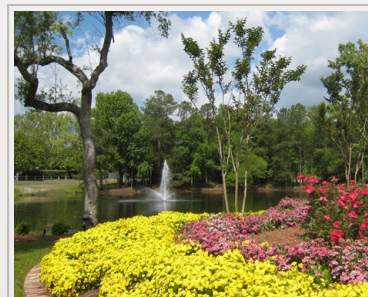
In just minutes, you'll find shopping, dining, the public boatramp and Topsail Island beaches, recently named 'Best Little Beach Town' by Trip Advisor.

Experience exceptional living at Crown Pointe today. Pre-sale homesites are available with build-to-suit packages starting in the low 400's.



# Crown Pointe

## COMMUNITY SITEMAP

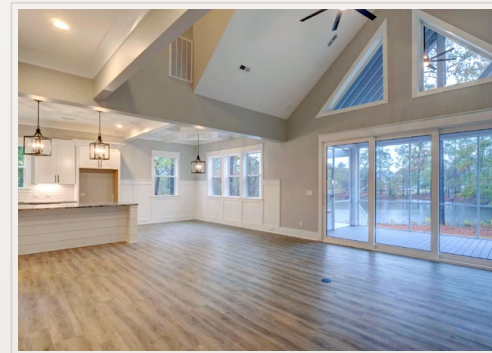






*CrownPointe*

# CUSTOM FLOOR PLANS



TO VIEW FLOORPLANS VISIT [LIVECROWNPOINTE.COM](https://livecrownpointe.com)

# Crown Pointe



-  Crown Pointe
- 2. Kawanis Park
- 3. Public Boatramp
- 4. Olde Point Golf Course
- 5. Belvedere Plantation Golf Course
- 6. Castle Bay Golf Course
- 7. Harris Teeter Shopping Center
- 8. Topsail Middle School & High School
- 9. Wilmington International Airport
- 10. Historic Downtown Wilmington
- 11. Mayfaire Towncenter
- 12. New Hanover Regional Medical Ctr.
- 13. UNC Wilmington





## LOCAL ATTRACTIONS

### 1-20 Minutes

Surf City & Topsail Beaches  
Thomas Tackle & Seafood  
IGA/ Food Lion/ Lowe's Food  
Topsail Island Treasures  
Kawanis Park  
Makin Waves JetSki Rentals  
Carolina Flyboarding  
Karen Beasley Sea Turtle Rescue  
Jolly Roger Inn & Pier  
Public Boatramp  
Herring's Outdoor Sports  
Salons & Spas  
Banking & Insurance  
Health & Fitness Centers  
Numerous Golf Courses  
Medical & Dental Services  
Seaview Pier  
Pharmacies  
Surf Shops  
Waterfront Dining

### 30-60 Minutes

Wilmington International Airport  
Historic Downtown Wilmington & Riverwalk  
Mayfaire Towne Center  
IMAX Regal 16 Theater  
Assortment of Shopping Boutiques  
Jacksonville  
Camp Lejeune Marine Corp Base  
Battleship USS North Carolina  
New Hanover Regional Medical Center  
UNC Wilmington  
Racetracks in Rocky Point & Jacksonville  
Fort Fisher & NC Aquarium  
Thalian Hall Center for the Performing Arts  
Wrightsville Beach  
Cape Fear Museum  
Airlie Gardens  
Bellamy Mansion  
New Hanover County Arboretum  
Cape Fear Serpentarium  
Wilmington Railroad Museum

*Crown Pointe*



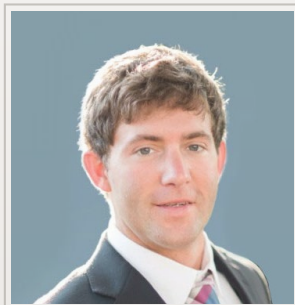
**Coastal Realty**  
ASSOCIATES



For more information or to schedule a showing, contact  
Andrew Smith at Coastal Realty Associates.

**Andrew Smith**  
Broker in Charge  
(910) 262-6744

guaranteed **Rate**®



For current mortgage rates and lending options, contact  
Adam Slack at Guaranteed Rate.

**Adam Slack**  
VP of Mortgage Lending  
(910) 473-5087



EQUAL HOUSING LENDER

NMLS: 203603





[CoastalRealtyAssociates.com](http://CoastalRealtyAssociates.com)

910-270-4444

